

Partial 3rd Floor

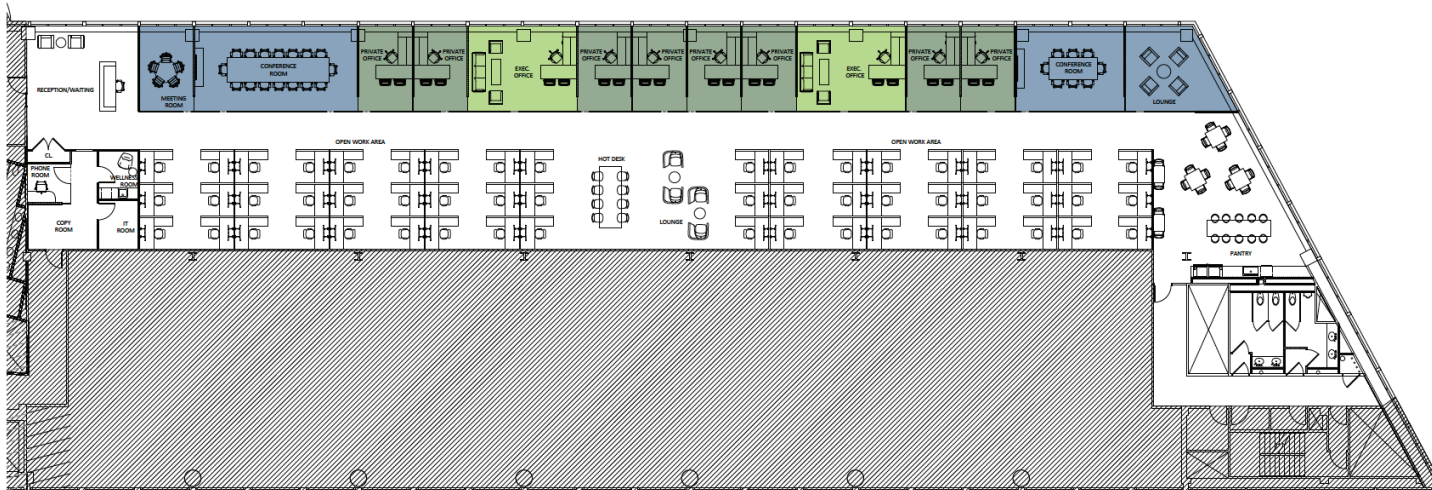
14,588 rsf

THE **LiNK**
200 ELM

Testfit A

Total Seats: 65

- 1 Reception
- 54 Workstations (6'x6')
- 8 Private Offices
- 2 Executive Offices
- 4 Meeting Rooms
- 1 Pantry
- 1 Phone Room
- 1 Wellness Room



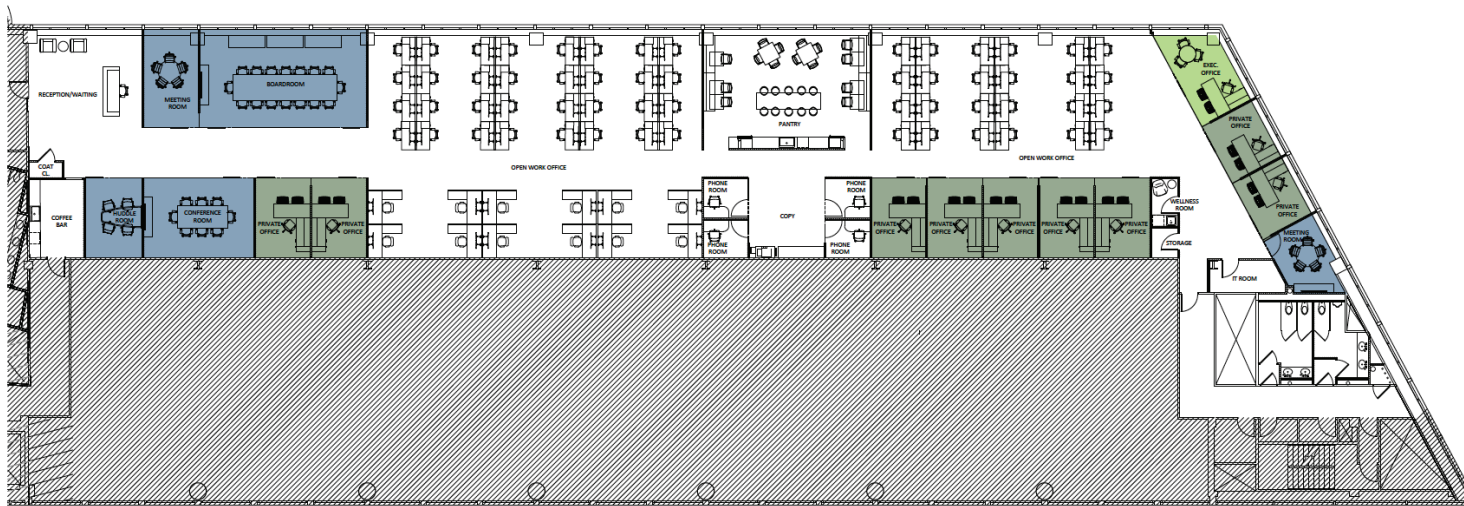
Gilbert L. Ohls
Managing Director
T: 212 418 2602
M: 203 249 8600
gil.ohls@jll.com

Matthew Felice
Executive Vice President
T: 212 812 6422
M: 203 506 0905
matt.felice@jll.com



Partial 3rd Floor

14,588 rsf



THE LINK

200 ELM

Testfit B

Total Seats: 79

- 1 Reception
- 56 Benching (60"x30")
- 12 Workstations (6'x6')
- 9 Private Offices
- 1 Executive Offices
- 5 Meeting Rooms
- 1 Pantry
- 1 Coffee Bars/Catering
- 1 Wellness Room
- 4 Phone Rooms



Gilbert L. Ohls
 Managing Director
 T: 212 418 2602
 M: 203 249 8600
 gil.ohls@jll.com

Matthew Felice
 Executive Vice President
 T: 212 812 6422
 M: 203 506 0905
 matt.felice@jll.com

